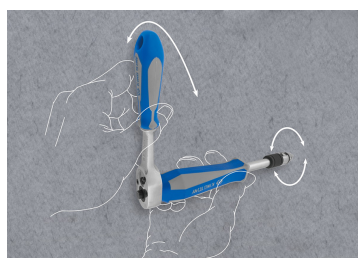
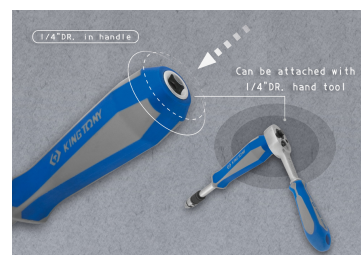


2176DF

Cabo para chave embutido de 1/4"

NF ISO 3315, ISO 3315, DIN 3122, ASME B107.10

- Conceção 2 em 1: cabo para chave embutido + porta-pontas
- Cabo bi-matéria (PP+TPR)



Comprimento (mm)

Quadrado

C (polegadas)

Peso (g)

2176DF

150

1/4"

6"

105