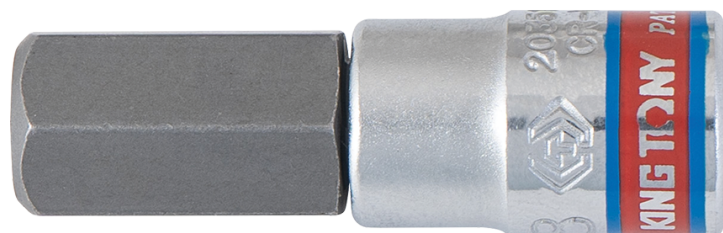



2035S

S Chave de caixa com ponta hexagonal em polegadas 1/4"

DIN 7422 / 3120



- Ponta com tratamento S2
- Acabamento cromado polido

|  | Dimensões (polegadas) | L (mm) | Peso (g) |
|---|-----------------------|--------|----------|
| 203504S | H1/8 | 37 | 15 |
| 203505S | H5/32 | 37 | 15 |
| 203506S | H3/16 | 37 | 15 |
| 203507S | H7/32 | 37 | 16 |
| 203508S | H1/4 | 37 | 18 |
| 203510S | H5/16 | 37 | 19 |
| 203512S | H3/8 | 37 | 23 |