

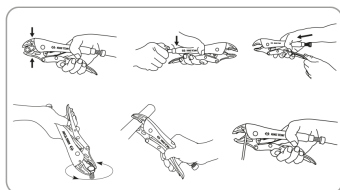
6011


Single-Point Lock Grip Pliers

ASME B107.500-2010



- Mordente tipo fino.
- Parafuso traseiro ajustável.
- Cortador de cabos integrado.
- Acabamento niquelado.



	L (mm)	C (polegadas)	Abertura máx (mm)	Peso (g)
601110	254	10	48	542
601107	185	7	38	352